

Strato Cruiser - luxury airship

Peter Lobner, updated 8 February 2022

Strato Cruiser is a concept for a luxury "lifestyle zeppelin" developed by German art director Tino Schaedler and designer Michael J. Brown. Their project is intended to "bring lifestyle and health into travel routines, which have become increasingly compacted and frenzied." The Strato Cruiser can offer overnight and medium-haul (transcontinental, transoceanic) "regenerative journeys that transform an otherwise exhausting and ordinary journey into a positive experience."



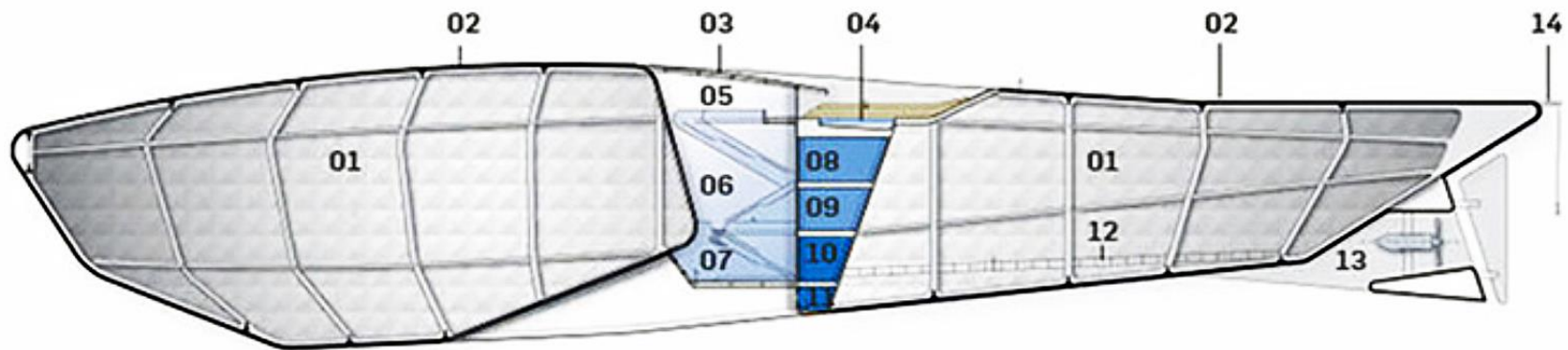
*Strato Cruiser showing large "Earthview" window.
Source: Gizmodo (2007)*



Strato Cruiser in flight. Source: Deezen (2007)



*Strato Cruiser over New York's Central Park.
Source: Gizmodo (2007)*



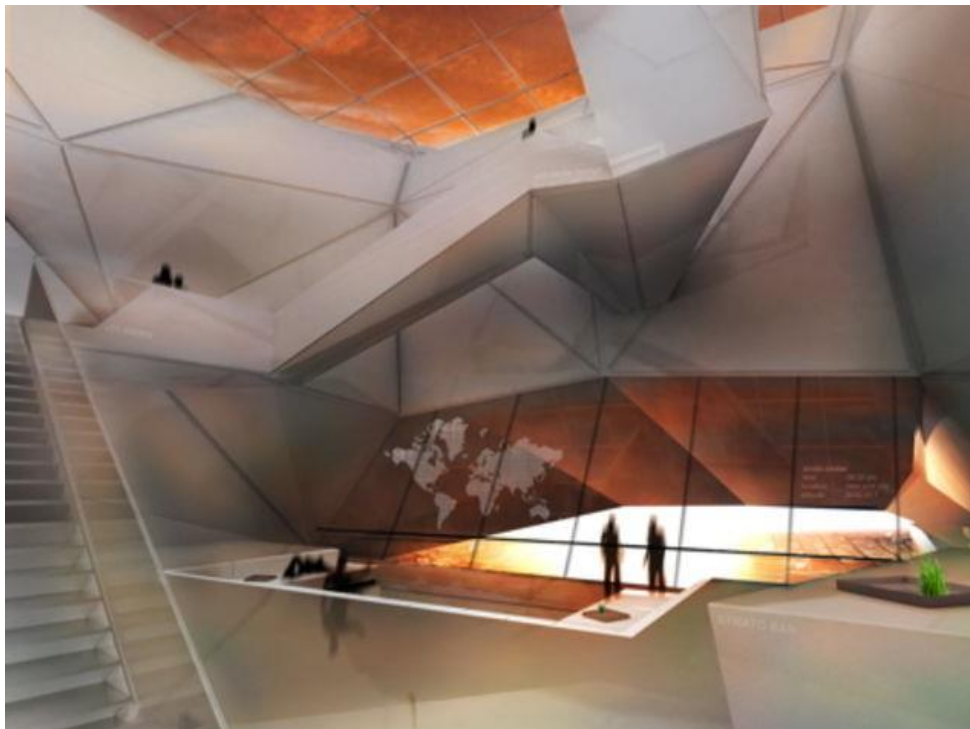
- 01** Rigid Airship Frame with Helium Chambers
- 02** Photovoltaic Cell Network
- 03** Retractable Polycarbonate Roof
- 04** Terraced Deck with Lap pool
- 05** SkyView Lounge
- 06** Main Atrium with Climbing Wall
- 07** EarthView Restaurant & Bar

- 08** Spa Treatment & Library
- 09** Private Suites
- 10** Kitchen & Staff Rooms
- 11** Captain's Bridge
- 12** Gantryway
- 13** Propulsion
- 14** Bungee Jumping Platform

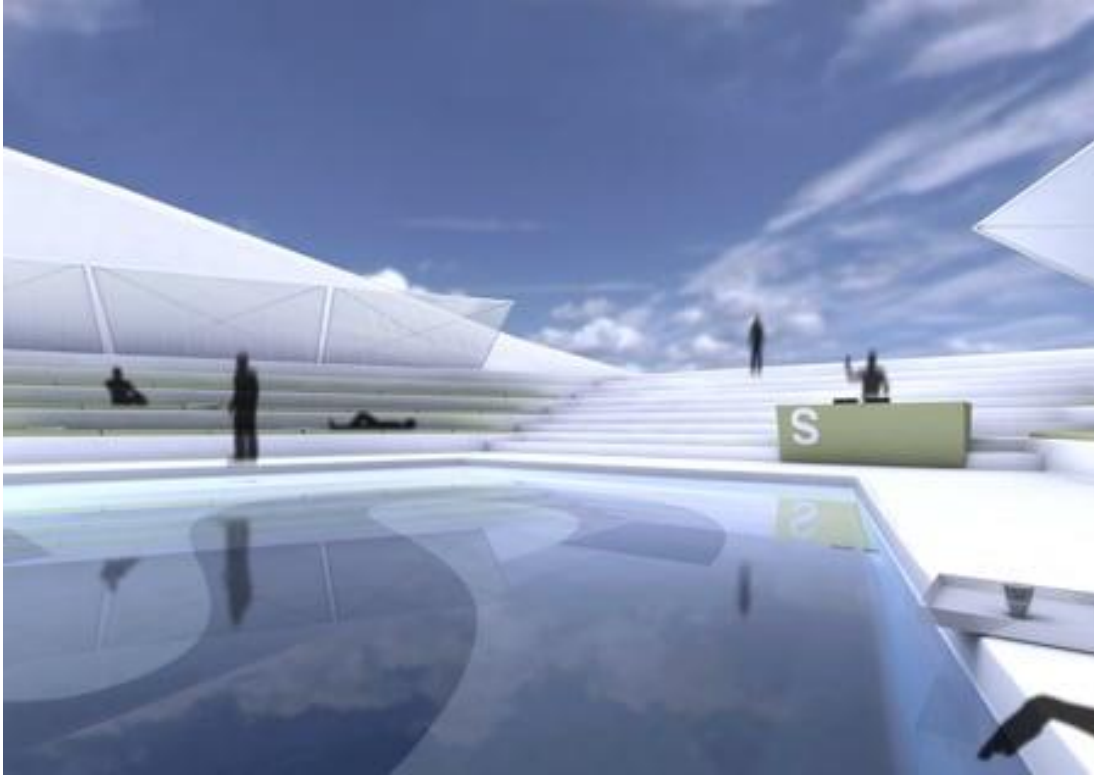
*Anatomy of the Strato Cruiser.
Source: Gizmodo (2007)*

Design features of the Strato Cruiser airship include:

- Rigid airship frame with helium lifting gas chambers
- Carbon fiber skin
- Passenger accommodations and facilities:
 - Captain's bridge and an earthward viewing restaurant and bar are on the lowest level.
 - A central atrium with a climbing wall provides access to a SkyView lounge and other facilities around the atrium.
 - A terrace deck with a retractable polycarbonate roof is on top level of the airship.
 - A lap pool on the terrace deck was proposed. However, even a modest lap pool measuring 20 x 2 x 2 meters would hold about 80 cubic meters of water, which would weigh about 80 metric tons. Such a pool seems to be an unlikely amenity for an airship.
 - Other passenger facilities include private suites and mini-offices, a spa, library and a bungee jumping platform.
- A photovoltaic system provides (supplementary) electric power.
- Cruising speed is about 160 kph (100 mph), "more than double the cruising speed of conventional blimps."



Strato Cruiser atrium. Source: Gizmodo (2007)



Strato Cruiser terrace sundeck and lap pool on top of the hull.



*Earthview window, as seen from below the Strato Cruiser.
Source, both graphics: Deezen (2007)*



Strato Cruiser at a remote terminal. Source: Nau2 GmbH (2007)

For more information

- Marcus Fairs, “Strato Cruiser airship concept by Tino Schaedler and Michael J Brown,” Dezeen, 8 October 2007:
<https://www.dezeen.com/2007/10/08/strato-cruiser-airship-concept-by-tino-schaedler-and-michael-j-brown/>
- Charlie White, “Strato Cruiser Airship, Floating Along Without Wings or Reality,” Gizmodo, 9 October 2007:
<https://gizmodo.com/strato-cruiser-airship-floating-along-without-wings-or-308702>
- Andreas, “Strato Cruiser – the designers discover Airships,” Airshipworld Blog, 19 November 2007:
<http://airshipworld.blogspot.com/2007/11/strato-cruiser-designers-discover.html>
- “Stratocruiser – A Concept for a High-luxury Slow traveling Zeppelin Cruiser,” Nau2 GmbH, 2007:
<http://nau2.com/portfolios/stratocruiser/>

Other *Modern Airships* articles

- Modern Airships - Part 1: <https://lynceans.org/all-posts/modern-airships-part-1/>
- Modern Airships - Part 2: <https://lynceans.org/all-posts/modern-airships-part-2/>
- Modern Airships - Part 3: <https://lynceans.org/all-posts/modern-airships-part-3/>